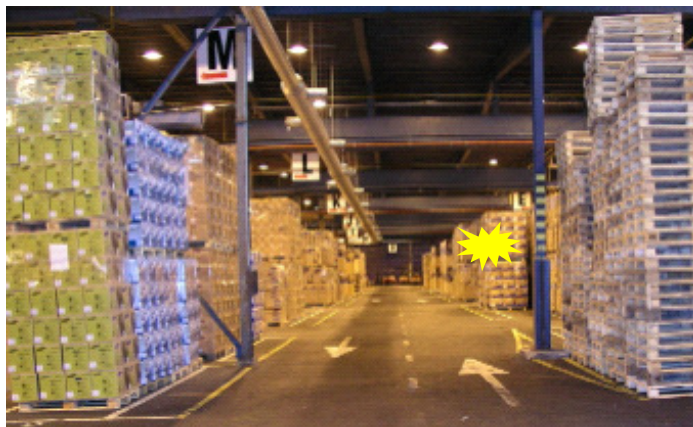


Pick-to-Light Kit

Long range item level pick-to-light applications can be used to quickly locate objects in warehouse environments. The pick-to-light active RFID tag has a bright light indicator and is always within range of at least one RFIDS™ reader.

Suitable objects might be pallets, containers, vehicles and machine parts. In a typical scenario, a picker or fork-lift driver will wirelessly obtain queue information to their handheld or vehicle mounted computer. By selecting the next item to pick on the touch screen, a rough indication of location will be provided. When reaching the approximate spot, a new selection will lighten up the object for fast finding.

Pick-to-light tags will, just like other RFIDS™ tags, provide a unique ID in intervals and modes set by the application. In addition, the bright indicator can be controlled from the application.



With the Pick-to-Light Kit, you will be able to:

- Try out long range pick-to-light applications
- Configure tags
- Develop applications
- Do site surveys for optimal antenna and reader placement



The Kit includes:

- 1 x Reader with host interface, antennas and power adapter (EU, US, UK, AU)
- 5 x Pharos™ long range pick-to-light tags
- CD with evaluation software, documentation and source code examples

Order no:

FSK-0705-U

RS232 & USB version

FSK-0705-L

Ethernet LAN version

(Plus freight. When ordering 3 or more kits, freight is waived)